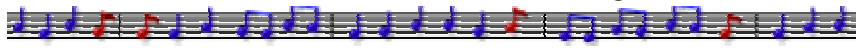


Eternal Flame - The Bangles



1. Listen and underline the correct words from the right.

_____ (1) your eyes, give me your hand, darling
Do you feel my heart beating, do you _____ (2)?
Do you feel the same, _____ (3) only dreaming?
_____ (4) burning an eternal flame?

Open/ Close
remember/ understand
am I / are you
Is this/ Is that

2. Listen and put the lines in order.

- I watch when you are sleeping, you belong with me
- Is this burning an eternal flame?
- Do you feel the same, am I only dreaming?
- I believe it's meant to be, darling

3. Listen and match.

- a) Say
- b) Sun shines
- c) A whole life
- d) and then you come
- e) I don't want to

- 1) lose this feeling, oh...
- 2) and ease the pain
- 3) my name
- 4) so lonely
- 5) through the rain

[break]

- a) Say
- b) Sun shines
- c) A whole life
- d) and then you come
- e) I don't want to

- 1) lose this feeling, oh...
- 2) and ease the pain
- 3) my name
- 4) so lonely
- 5) through the rain

4. Listen and underline the correct words from the right.

_____ (1) your eyes, give me your hand
Do you feel my heart beating, do you _____ (2)?
Do you feel the same, _____ (3) only dreaming?
_____ (4) burning an eternal flame?

Open/ Close
remember/ understand
am I / are you
Is this/ Is that

_____ (1) your eyes, give me your hand, darling
Do you feel my heart beating, do you _____ (2)?
Do you feel the same, _____ (3) only dreaming?
_____ (4) burning an eternal flame?

Open/ Close
remember/ understand
am I / are you
Is this/ Is that

Adapted from New English File. Elementary.

KEY

Eternal Flame - The Bangles

1. Listen and underline the correct words from the right.

_____ (1) your eyes, give me your hand, darling
Do you feel my heart beating, do you _____ (2)?
Do you feel the same, _____ (3) only dreaming?
_____ (4) burning an eternal flame?

Open/ Close
remember/ understand
am I / are you
Is this/ Is that

2. Listen and put the lines in order.

I believe it's meant to be, darling
I watch when you are sleeping, you belong with me
Do you feel the same, am I only dreaming?
Is this burning an eternal flame?

3. Listen and match.

a) Say
b) Sun shines
c) A whole life
d) and then you come
e) I don't want to

3) my name
5) through the rain
4) so lonely
2) and ease the pain
1) lose this feeling, oh...

4. Listen and underline the correct words from the right.

_____ (1) your eyes, give me your hand
Do you feel my heart beating, do you _____ (2)?
Do you feel the same, _____ (3) only dreaming?
_____ (4) burning an eternal flame?

Open/ Close
remember/ understand
am I / are you
Is this/ Is that

_____ (1) your eyes, give me your hand, darling
Do you feel my heart beating, do you _____ (2)?
Do you feel the same, _____ (3) only dreaming?
_____ (4) burning an eternal flame?

Open/ Close
remember/ understand
am I / are you
Is this/ Is that